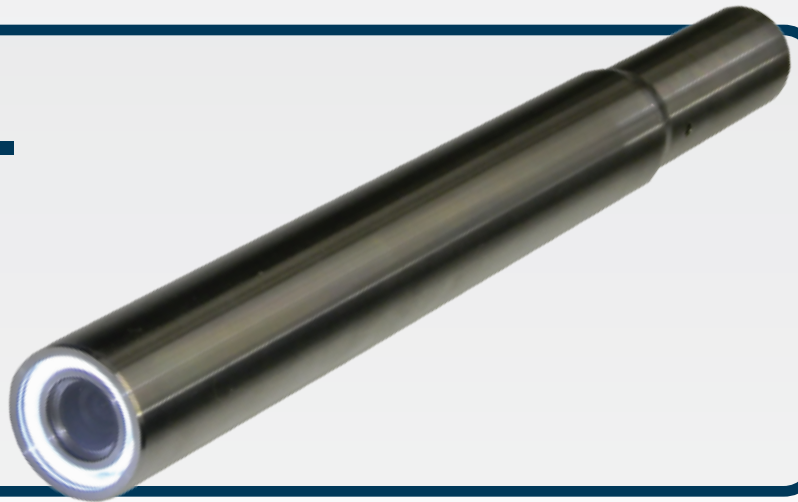


SC-166 CAMERA TECH SPECS

SC-166 CAMERA

Small diameter downhole camera for water wells, boreholes and vertical shafts



The SC-166 downhole camera is designed for water wells, boreholes and vertical shafts as small as 2 inches in diameter. This camera has effective survey capabilities for 2-inch to 10-inch (5-cm to 25-cm) well diameters. The SC-166 well camera system comes equipped with a protective carry case provided for storage, adjustable centering bands, and cable head protector.

The SC-166 will work with all R-Cam 1000 and R-Cam 1300 systems. Simply disconnect the existing camera and utilize the SC-166 for smaller diameter holes or monitor wells. The robust 304 Stainless Steel housing is designed for rugged applications.

The SC-166 can be sold as an accessory camera to existing systems, or as a cost effective packaged solution. See your nearest dealer for details.



CAMERA SPECIFICATIONS

Camera Diameter: 1.66 inches (4.22 cm) O.D.

Overall Camera Length: 16.5 inches (42 cm)

Housing: Stainless steel

Lens: BK-7 glass

Power Supply: Portable 12VDC battery pack and charger. Rechargeable by local current (please specify at time of order).

Total Camera Weight: 9 lbs (4.1 kg)

Pressure Rating: Pressure tested and waterproof to 500 psi

Scanning System: Downhole greater than or equal to 330 TVL (both NTSC and PAL)

Operating Temperature: 0° to 50° C (32° to 122° F)

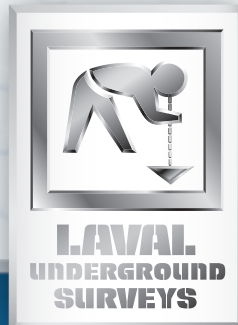
Recorder: Records onto a 12 VDC DVDR (please specify NTSC or PAL at time of order)

LED Lighting: High intensity, long life, shock proof LED lighting

Depth Counter: On-screen depth display measured in feet and tenths, or meters.

Monitor: 7-inch LCD color monitor with sunscreen viewing hood

Winch, Reel, Motor and Cart: 12VDC electric powered, variable speed reel for raising and lowering camera in well. All parts are mounted on a small, two-wheeled cart with extendable 36-inch boom.



Note: Specifications subject to change. Confirm when ordering.

60 years of innovation

www.lavalunderground.com

1458 North Dearing Avenue Fresno, California 93703, USA

Telephone 559-251-1396 Fax 559-251-2096

E-mail info@lavalunderground.com